

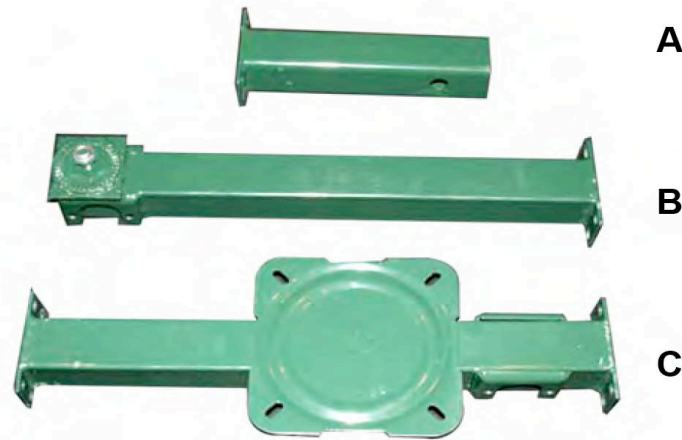


**www.gdkoutdoors.co.uk**  
**01582 879 588**

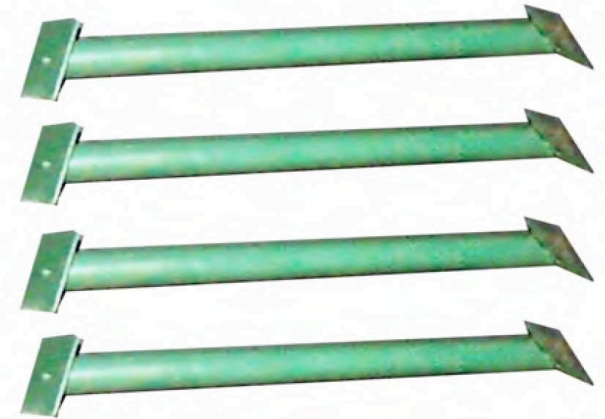
## **ST200 instruction manual**



M8 Bolts - 16  
M8 Nuts - 8  
4 Seat Screws (not shown)  
Wrench (not shown)



A - Hitch Receiver  
Adapter  
B - Front Tube  
C - Seat Post  
Seat ( not shown)



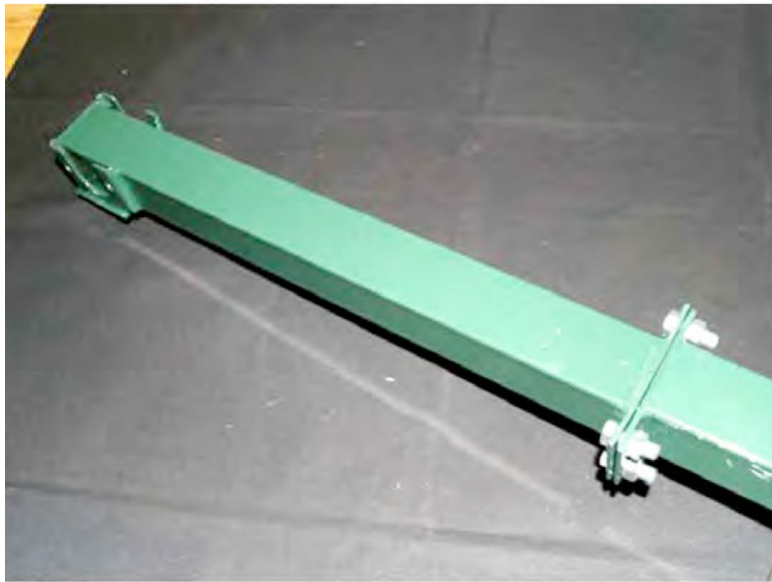
4 Legs

**Find Instructions, Video, FAQs & Keep up with  
all of our new & exciting products by visiting: [www.gdkoutdoors.co.uk](http://www.gdkoutdoors.co.uk)**

GDK Outdoors does not accept any responsibility for damages and/or injury sustained from the use or misuse of this product.

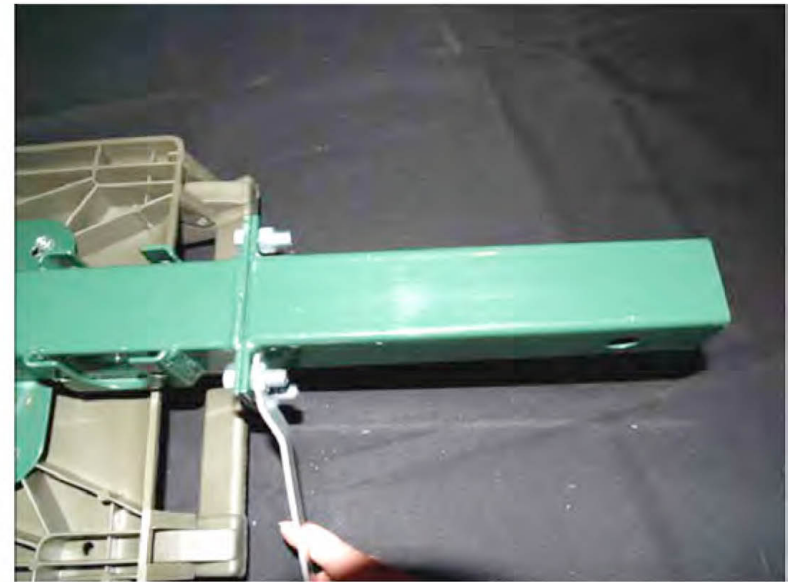


If not already attached, secure the seat to the seat post with the 4 self tapping screws.

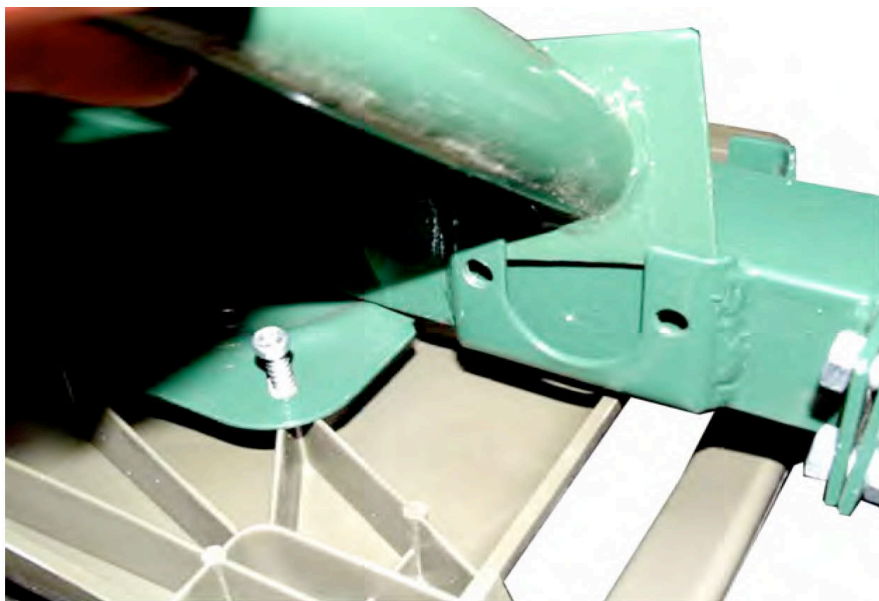


Place the Front Tube (part B) to the Seat Post (part C) and secure with nuts as seen in the left photograph.

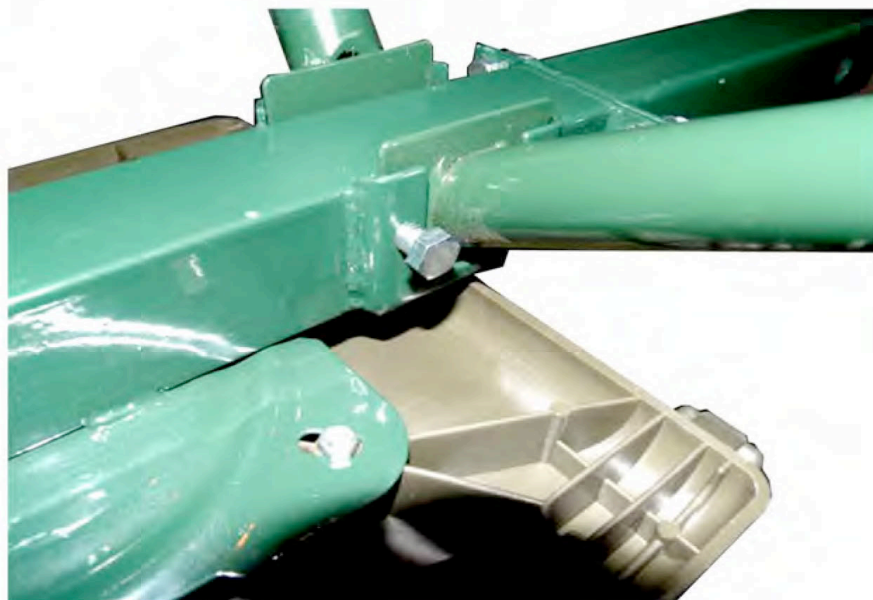
The hitch receiver is optional, but if being used you will bolt it to the rear of the seat post as seen in the right photograph, slide into the hitch and remove the legs to use.







Take the four support legs and slot the into the leg brackets as per pictures. Note that the predrilled hole at the end of each leg are the feet not the mounting brackets. Therefore, The square plate with the hole should be the end that will be sitting on the ground. Now you're ready to attach the trap head. (separate instructions)



**Find Instructions, Video, FAQs & Keep up with  
all of our new & exciting products by visiting: [www.gdkoutdoors.co.uk](http://www.gdkoutdoors.co.uk)**

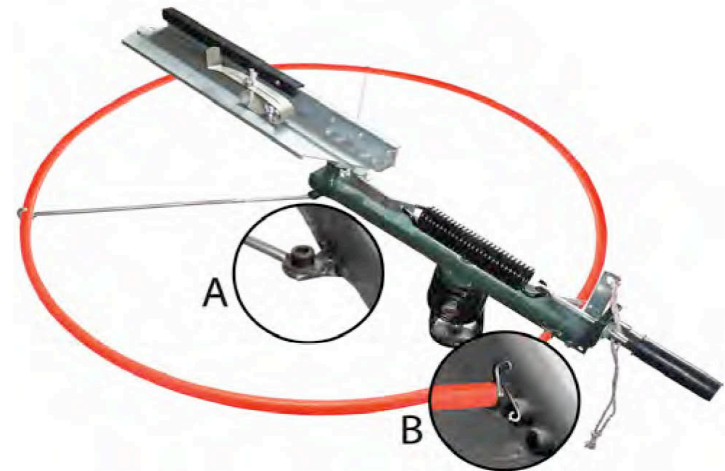
GDK Outdoors does not accept any responsibility for damages and/or injury sustained from the use or misuse of this product.

# FULL COCK TRAP HEAD

6 To attach safety ring guard, attach the ring brace arms using small allen screws (A).

Pinch arms of the spring holders (B) and slide them over ends of ring guard. Push ends of ring guard over posts on trap head and slide spring holder down over guard and post to secure.

Secure with brace arms so ring guard will show the path of the throwing arm.



Item Description	Qty
1 Bolt M12x40	- 1
2 Nut M12	- 1
3 Allen Screws	- 2
4 Spade Bolt M10	1
5 Nylock Nut M10	1
6 Washer M10	1
7 Black Main Spring	1
8 Rubber Handle	1
9 Universal Clip w/ hardware	1
10 Wrench	1
11 Allen Wrench	
12 Trap Head Complete	1
13 Pivot Mount Assembly	1



**\*\* DANGER: Keep spring DISCONNECTED when not in use or on display**

**\*\*NEVER stand in path of throwing arm**

**\*\*NEVER store or transport without first removing spring**

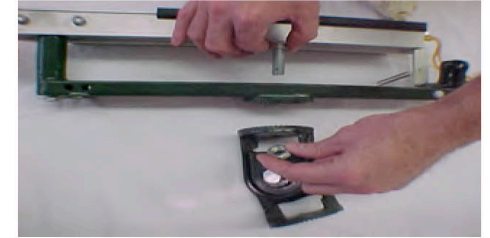
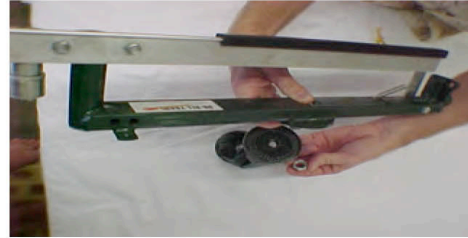
**GDK Out doors does not accept any responsibility for damages and/or injury sustained from the use or misuse of this product.**



# FULL COCK TRAP HEAD

## Trap Head Assembly

- 1 Insert 1 M12x40 bolt into hexagon shaped opening, in the trap head carriage through the top of the pivot mount assembly; interlocking the gear mesh teeth. Secure with M12 nut using wrench.



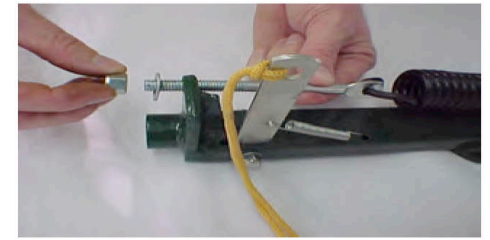
- 2 Insert/slide the universal clip into the extruded channel on the throwing arm. Make sure the open end of the clip points towards the pointed end of the arm.  
\*\*The sliding universal clip allows for speed and direction change. You can place any size target under this clip as singles, stacked doubles or nested pairs.



- 3 Hook the black main spring into the silver swiveling spring hook, which is attached at the throwing arm pivot point.



- 4 At the opposite end of the black main spring, attach the M10 spade bolt. Pull the threaded end of the spade bolt through the hole at the back of the trap head carriage. Secure main spring and spade bolt with M10 washer and M10 nylock nut. Use wrench provided to tighten black main spring until 8 threads of the spade bolt are showing.



- 5 Insert rubber handle into the end of the trap head carriage.

**\*\*When Wobbler Kit accessory is used please use handle to hold the trap in position at all times**

