



www.gdkoutdoors.co.uk
01582 879 588

CH300 Instruction manual

Base Hardware Included:

M12x25 Bolt & M12 Nut – 1

M8x16 Bolts & M8 Nuts- 12

Allen Wrench – 1

Hex Wrench - 1

Trap Head Hardware Included:

Bolt M12x40 - 1

Nut M12 - 1

Allen Screws - 2

Spade Bolt M10 1

Nylock Nut M10 1

Washer M10 1

Black Main Spring 1

Rubber Handle 1

Universal Clip w/ hardware 1

Wrench 1

Allen Wrench

Trap Head Complete 1

Pivot Mount Assembly 1



**Find Instructions, Video, FAQs & Keep up with
all of our new & exciting products by visiting: www.gdkoutdoors.co.uk**

GDK Outdoors does not accept any responsibility for damages and/or injury sustained from the use or misuse of this product.

Step One



(DO NOT TIGHTEN HEX NUTS COMPLETELY UNTIL ALL HAVE BEEN STARTED)

The hex bolts are the same size as the holes, therefore it will be a tight fit to ensure a stable and firm base.

Take the Ground/Base Frame with holes and lay out in a triangular shape. Take one of the Side/Corner Upright Frames and overlap one corner of the Ground/Base triangle. Push the hex bolts (one of the 12 included) through the ground base and into the side corner upright from the inside out. Secure with one of the 12 provided hex nuts.

Using adjustable ground spikes:

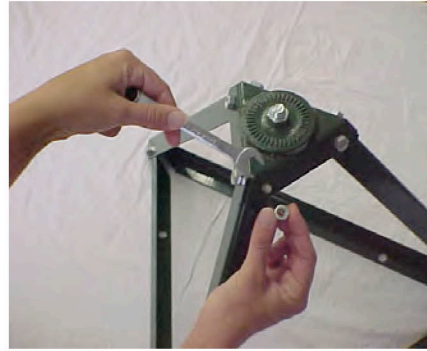
Step 1: Take top nut off spike and insert spike through the one of holes in the Clayhawk base from underneath. Push into the ground and replace top nut.

Repeat in each corner.

Step 2: Use provided wrenches to tighten locking nut down.



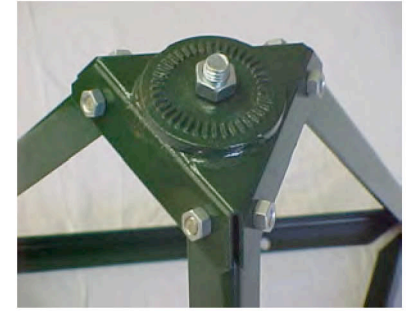
Step Two



Once you have assembled the bottom and sides of the base assembly, cap with the Triangular/Top Pivot casting.

Now that the top is in place, secure with provided hex bolts and hex nuts from the inside out. Be sure to go back and tighten down all hex nuts on frame assembly.

Step Three



Take the 1 3/4" hex bolt and push up through the center hole of the Triangular/Top Pivot casting securing with the 1/2" hex nut. This is where you will attach the 3 Pivot Mount and your Trap Head.

If the ground is soft you should also use sand bags or mount directly to a sheet of plywood. Make sure you control the trap by holding onto the handle when in use.

1. Insert 1 M12x40 bolt into hexagon shaped opening, in the trap head carriage through the top of the pivot mount assembly; interlocking the gear mesh teeth. Secure with M12 nut using wrench.

2. Insert/slide the universal clip into the extruded channel on the throwing arm. Make sure the open end of the clip points towards the pointed end of the arm. **The sliding universal clip allows for speed and direction change. You can place any size target under this clip as singles, stacked doubles or nested pairs.

3. Hook the black main spring into the silver swiveling spring hook, which is attached at the throwing arm pivot point.

4. At the opposite end of the black main spring, attach the M10 spade bolt. Pull the threaded end of the spade bolt through the hole at the back of the trap head carriage. Secure main spring and of the trap head carriage. Secure main spring and spade bolt with M10 washer and M10 nylock nut. Use wrench provided to tighten black main spring until 8 threads of the spade bolt are showing.

5. Insert rubber handle into the end of the trap head carriage.

****When Wobbler Kit accessory is used please use handle to hold the trap in position at all times**

6. To attach safety ring guard, attach the ring brace arms using small allen screws (A).

Pinch arms of the spring holders (B) and slide them over ends of ring guard. Push ends of ring guard over posts on trap head and slide spring holder down over guard and post to secure.

Secure with brace arms so ring guard will show the path of the throwing arm.

