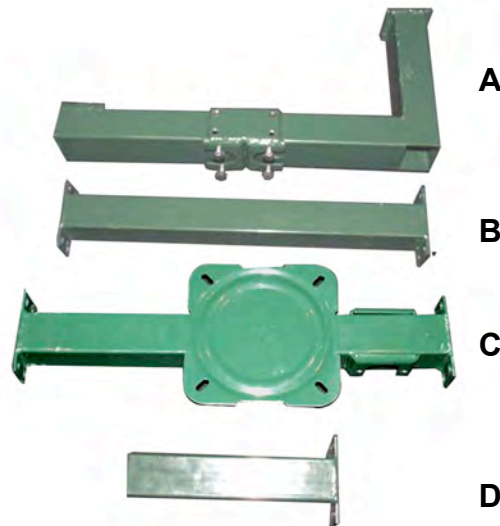




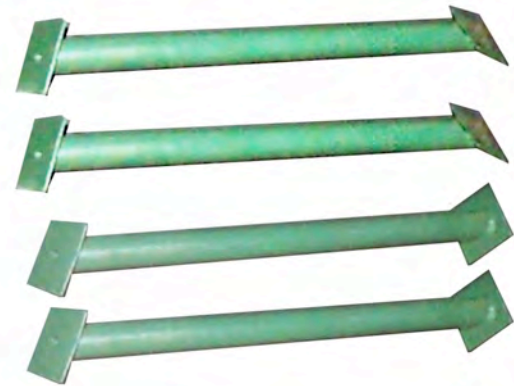
DOUBLE FRAME ASSEMBLY



M8 Bolts - 20
M8 Nuts - 8
4 Seat Screws (not shown)
Wrench

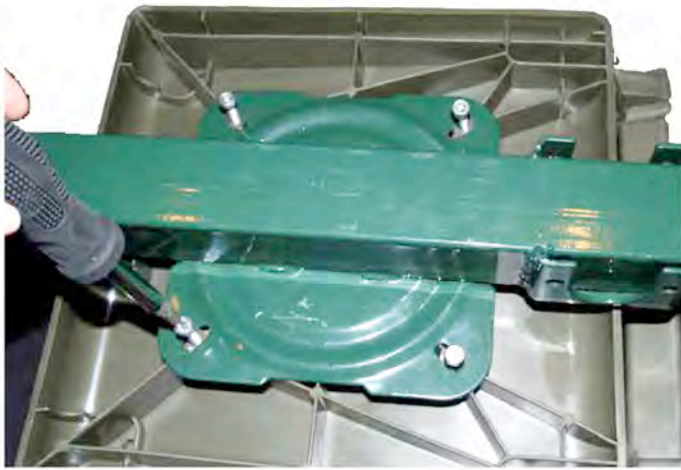


A - L Bracket
B - Front Tube
C - Seat Post
D - Hitch Receiver Adapter
Seat (not shown)



4 Legs

**Find Instructions, Video, FAQs & Keep up with
all of our new & exciting products by visiting:
www.gdkoutdoors.co.uk**



If not already attached, secure the seat to the seat post with the 4 self tapping screws.

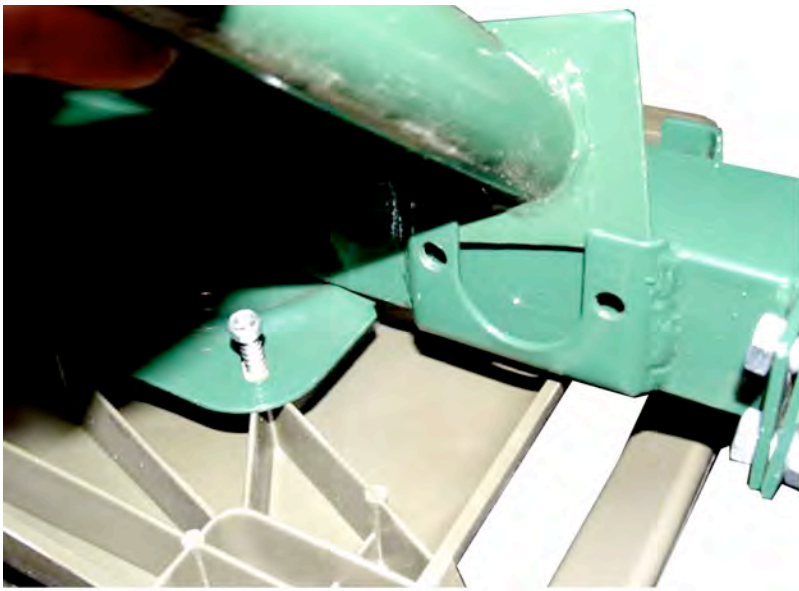
Place the Front Tube (part B) to the Seat Post (part C) and secure with nuts as seen in the right photograph.



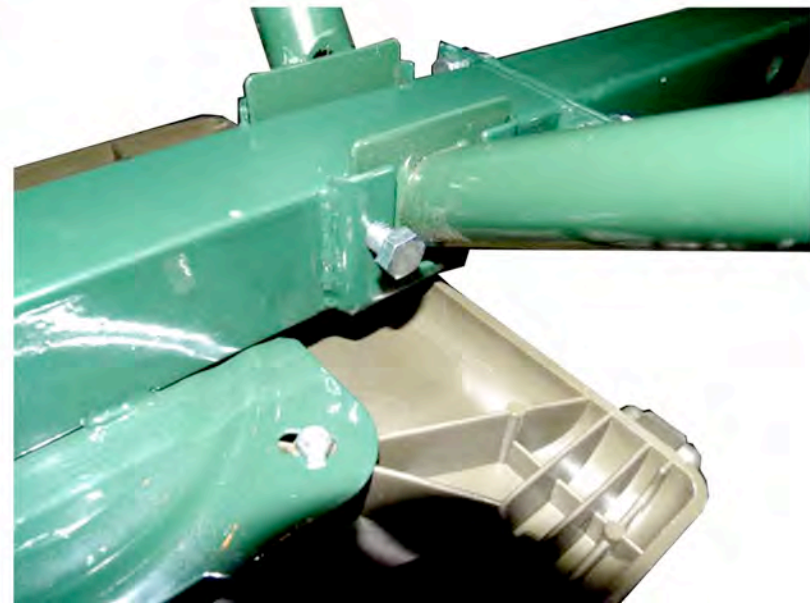
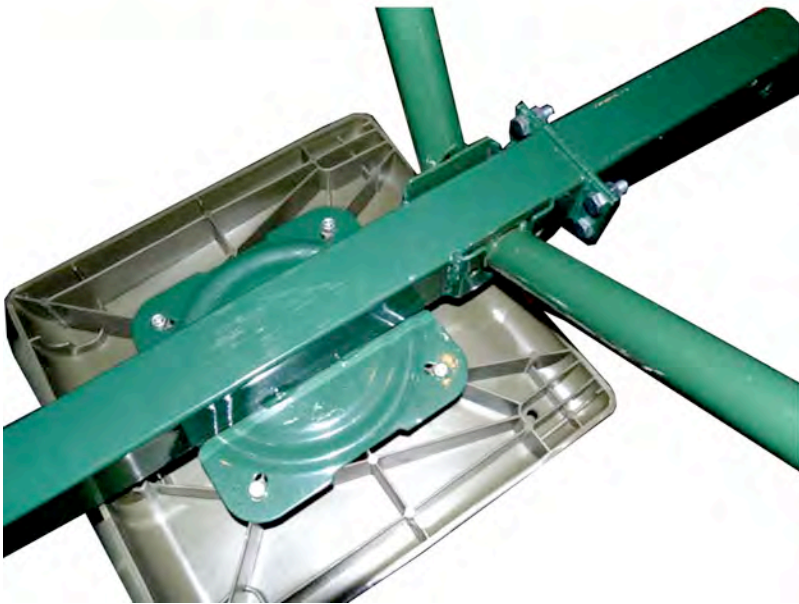
Now attach the L bracket (part A) to the front tube and secure with bolts as seen in left photograph.

The hitch receiver (part D) is optional, but if being used you will bolt it to the rear of the seat post as seen in the right photograph, slide it into your hitch and remove the legs to use.





Take the four support legs and slot the into the leg brackets as per pictures. Note that the predrilled hole at the end of each leg are the feet not the mounting brackets. Therefore, The square plate with the hole should be the end that will be sitting on the ground. Now you're ready to attach the trap head. (separate instructions)



www.gdkoutdoors.co.uk

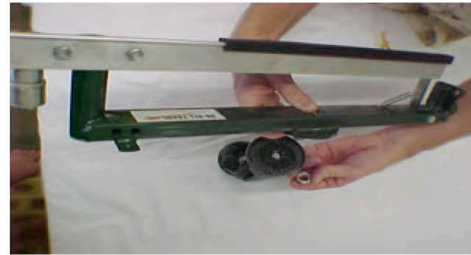
** DANGER: Keep spring DISCONNECTED when not in use or on display
**NEVER stand in path of throwing arm
**NEVER store or transport without first removing spring

GDK Outdoors does not accept any responsibility for damages and/or injury sustained from the use or misuse of this product.

FULL COCK TRAP HEAD

Trap Head Assembly

1 Insert 1 M12x40 bolt into hexagon shaped opening, in the trap head carriage through the top of the pivot mount assembly; interlocking the gear mesh teeth. Secure with M12 nut using wrench.



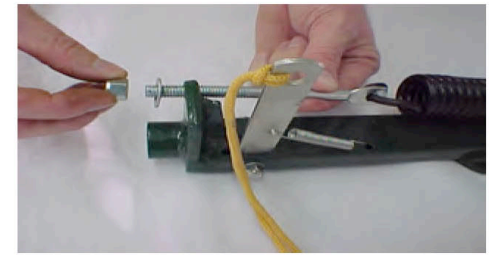
2 Insert/slide the universal clip into the extruded channel on the throwing arm. Make sure the open end of the clip points towards the pointed end of the arm.
**The sliding universal clip allows for speed and direction change. You can place any size target under this clip as singles, stacked doubles or nested pairs.



3 Hook the black main spring into the silver swiveling spring hook, which is attached at the throwing arm pivot point.



4 At the opposite end of the black main spring, attach the M10 spade bolt. Pull the threaded end of the spade bolt through the hole at the back of the trap head carriage. Secure main spring and spade bolt with M10 washer and M10 nylock nut. Use wrench provided to tighten black main spring until 8 threads of the spade bolt are showing.



5 Insert rubber handle into the end of the trap head carriage.

****When Wobbler Kit accessory is used please use handle to hold the trap in position at all times**



