

BY78 Backyard Double Assembly Instructions

Hardware Included:

8M Bolts – 20

8M Nuts - 8

Self Tapping Screws - 4

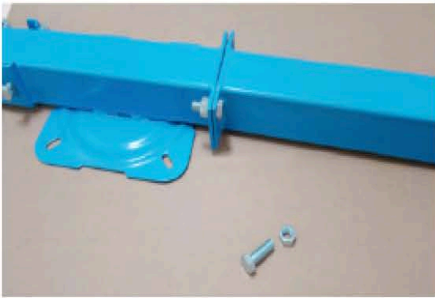
Allen Wrench – 1

Hex Wrench – 1



FRAME ASSEMBLY

Step One



Take the tail beam and assemble securely to the flat mounting plate on the back of the seat assembly using four 8M nuts and 8M bolts.

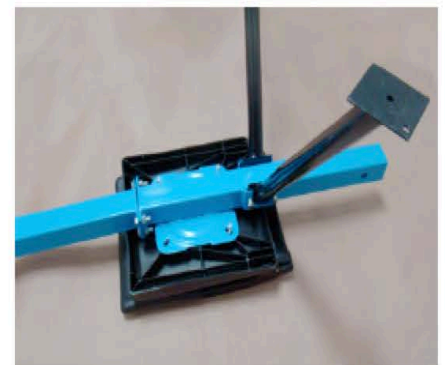
Place the seat assembly/sliding beam assembly upright (with plastic seat on top). Take the Front T Tube and place it against the mounting plate at the front of the sliding beam assembly. With the four holes aligned, screw in the four 8M Bolts into the the threaded holes on the Front T Tube.

Step Two



Take the four support legs and slot them into the four leg brackets as per pictures. Secure them with the bolts provided. *****Note that the predrilled holes at the end of each leg are the feet not the mounting brackets. These holes are provided if you want to mount your trap frame to a solid surface or platform.

Step Three



Take plastic seat and position onto the seat plate/seat assembly making sure the seat back folds toward the flat mounting plate for the tail beam assembly. Secure the seat to the seat plate by using the 4 self tapping screws.

THROWING ARM ASSEMBLY



Attach pivot mount to unit frame – Attachment will be the same regardless of type (ie: Post Mount, Clayhawk, Single or Double).



Insert 1 3/4" bolt into hexagon shaped opening, in the trap head carriage through the top of the pivot mount assembly; interlocking the gear mesh teeth. Secure with 1/2" nut using wrench.



Place the paddle-shaped counter balance on the arm, aligning all pre-drilled holes. By using the allen screws, attach the throwing arm and counter balance to steel mounting plate and secure tightly with provided allen wrench.



Attach Trigger by separating the 2 parts of the trigger block. Slide trigger facing up into slot in the back of the trap head with the small part of the block on top of the trap head and the large piece below. Tighten the bolts securely through the block using the nuts underneath.



Attach handle to inside of trap head by screwing allen bolts through trap head into handle. Tighten securely.



Rotate the arm counter clockwise into the 1 o'clock position. Hook the black main spring into the silver swiveling spring hook, which is attached underneath the throwing arm/clutch pivot point.

At the narrow end of the black main spring, screw one of the provided 1/2" nuts onto the threaded 1/2" bolt about 1" deep. Pull the threaded 1/2" bolt through the hole at the back of the trap head carriage. Now screw on the other 1/2" nut with the provided wrench until the two nuts meet. **It is NOT necessary to tighten the spring all the way for optimum speed and distance.



Step 1

Unscrew the allen key bolts, place the 2 bars over the hole, and re-screw the allen key bolts to secure them. (The hook end must be facing upwards.)



Step 2

By the throwing arm release lever, there is a small stump either side. place the end of the tubing over the stump, then secure it with the pinch clip provided. (repeat on the other side.)



Your throwing arm safety ring is now complete

